



LCFC Filter Cart

Flow rate available in 1 GPM, 5 GPM, 11 GPM, & 22 GPM

Our **LCFC Filter Cartridge Filter Cart** is the ideal filtration system for the recirculating or transferring of fluids in and out of reservoirs and holding tanks. It is ideal for high viscosity lubrication and hydraulic oils.

The **LCFC** is the perfect filtration unit to use when high levels of particulate contamination are present. The high surface area yields extended service life of the filter elements reducing downtime and filter change-outs.

The **LCFC Filter Cart** is manufactured with U.S. made epoxy coated steel. It has large 10" non-shred rubber wheels with swivel/locking casters for ease of portability. All tubing is 304 Stainless Steel for a large compatibility range.

The standard cart is compatible with petroleum and mineral based fluids. For polyol ester, phosphate ester, and other specified synthetics use our Viton® seal option or contact factory.

Recommended Viscosity Range

5 GPM*: 28 SSU ~ 4000 SSU, 6 cSt ~ 800 cSt

11 GPM*: 28 SSU ~ 4000 SSU, 6 cSt ~ 800 cSt

22 GPM*: 28 SSU ~ 2000 SSU, 6 cSt ~ 400 cSt

*At maximum viscosity clean element pressure drop on 6M media code < 10 psid.
Please check maximum viscosity of oil in coldest condition.



LCFC Filter Cart Above Shown with 5 GPM Pump and Optional Particle Counter

Advantages

BETA 1000 Rated Filter Elements per ISO 16889 Standards

Single or Double Length Element Options

Water Removal Filter Elements

Condition Bulk Oil Before Use

Extend Service Life of Oil

ISO Viscosity Range of ISO 22 to ISO 320

Fluid Compatibility

To avoid the risk of contamination, it is recommended to filter all new oil prior to entering your system. On average, new oil delivered from a drum has a cleanliness level of ISO Code 22/21/19. Water content from new oil averages 200 to 300 PPM.



Back View



VFD (Optional)



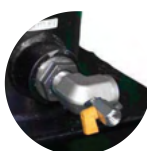
Spin-On Strainer
(Optional)



Drains



Differential Pressure
Gauge



Oil Sampling Ports

Standard Features

1, 5, 11, and 22 GPM Flow Rates

115 VAC 60 Hz 1P Electrical Services

Internal Pressure Relief on Pump @ 100 PSI

45 PSID True Differential Pressure Gauge

(2) Oil Sampling Ports

System Pressure Gauge

Hour Meter

(1) Vent Relief Valve

(2) Drain Valves

(2) Medium Pressure Hydraulic Hoses

*Additional options are available upon request. All carts can be completely customized to your specific application.



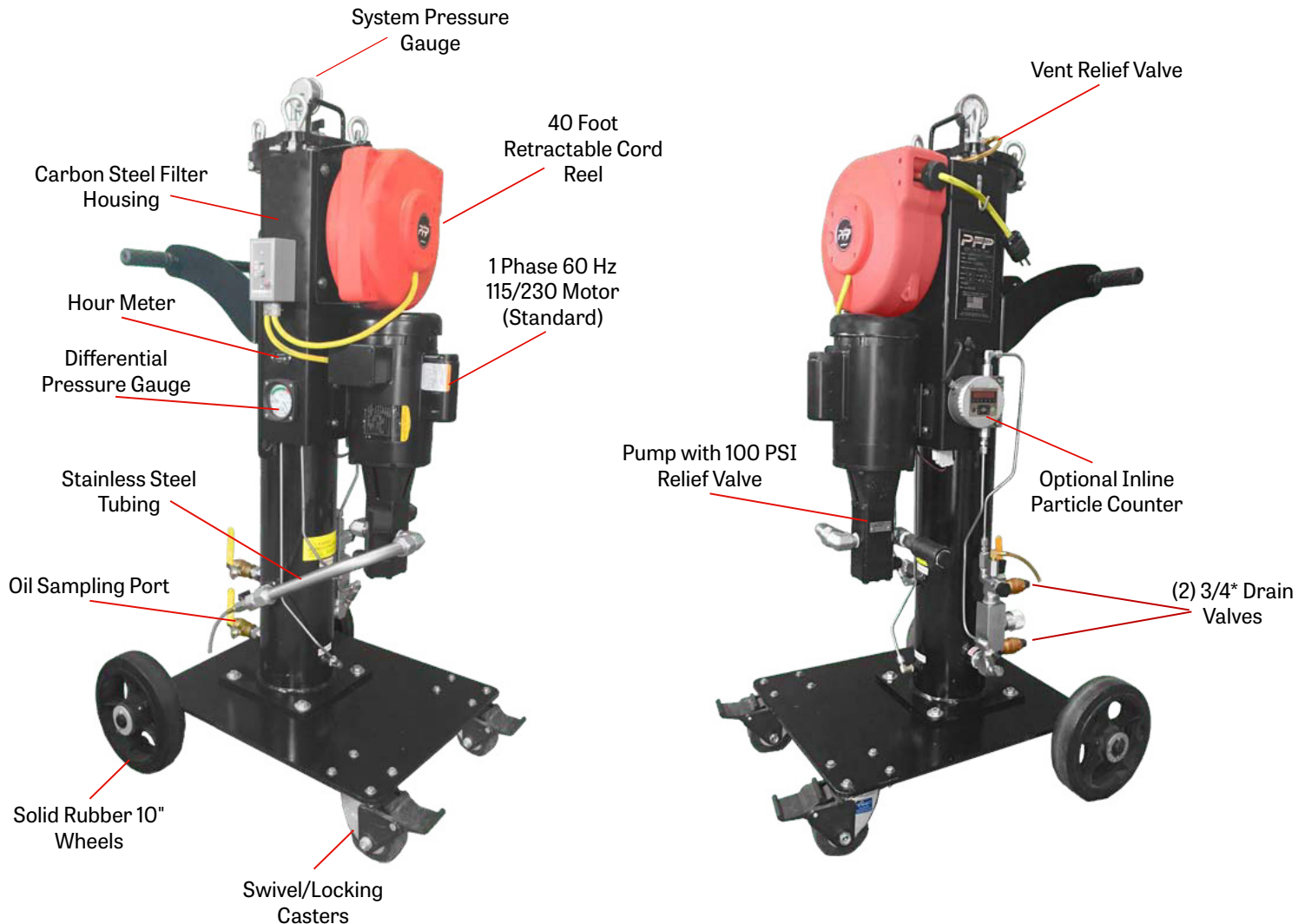
Precision Filtration Products | Pennsburg, PA
215-679-6645 | 215-679-6648
sales@pfpusa.com | www.pfpusa.com





LCFC Filter Cart

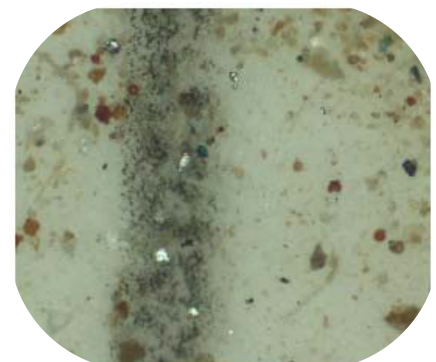
Flow rate available in 1 GPM, 5 GPM, 11 GPM, & 22 GPM



Particulate & Water Removal from New Oil

New oil may not be suitable for use in some hydraulic and lube systems because of contamination caused during the production and transportation process. High levels of particulate and water contamination may collect in the oil causing it to be out of code. A common ISO Code for new oil is 24/22/19.

Our LCFC Filter Cart is ideal for removing free water contamination, as well as capturing particulate to help you achieve your ISO Cleanliness Codes. If free or dissolved water are present it can lead to and accelerate abrasive wear, corrosion, system failure, and many more. All of which lead to costly repairs and downtime.



New Oil



Precision Filtration Products | Pennsburg, PA
215-679-6645 | 215-679-6648
sales@pfpusa.com | www.pfpusa.com

Proudly Made

In The USA



LCFC Filter Cart

Flow rate available in 1 GPM, 5 GPM, 11 GPM, & 22 GPM

Improving ISO Codes

Laboratory and field tests prove time and time again that our filters consistently deliver lower ISO fluid cleanliness codes. Improving fluid cleanliness means reduced downtime, longer fluid life, and more reliable equipment.

Develop a Fluid Cleanliness Target

PFP will help you develop a plan to achieve/maintain target fluid cleanliness. Arm yourself with the support, training, tools, and practices to operate more efficiently, maximize uptime, and save money.

New Oil is Typically Dirty Oil

New oil can be one of the worst sources of particulate and water contamination. 24/22/19 is a common ISO code for new oil which is not suitable for hydraulic or lubrication systems. A good target for new oil cleanliness is 16/14/11.

Hydraulic Component

Current ISO Code	Target ISO Code	Target ISO Code	Target ISO Code	Target ISO Code
-	2 x Life	3 x Life	4 x Life	5 x Life
28/26/23	25/23/21	25/22/19	23/21/18	22/20/17
27/25/22	25/23/19	23/21/18	22/20/17	21/19/16
26/24/21	23/21/18	22/20/17	21/19/16	21/19/15
25/23/20	22/20/17	21/19/16	20/18/15	19/17/14
25/22/19	21/19/16	20/18/15	19/17/14	18/16/13
23/21/18	20/18/15	19/17/14	18/16/13	17/15/12
22/20/17	19/17/14	18/16/13	17/15/12	16/14/11
21/19/16	18/16/13	17/15/12	16/14/11	15/13/10
20/18/15	17/15/12	16/14/11	15/13/10	14/12/9
19/17/14	16/14/11	15/13/10	14/12/9	14/12/8
18/16/13	15/13/10	14/12/9	13/11/8	-
17/15/12	14/12/9	13/11/8	-	-
16/14/11	13/11/8	-	-	-
15/13/10	13/11/8	-	-	-
14/12/9	13/11/9	-	-	-

Roller Contact Bearing

Current ISO Code	Target ISO Code	Target ISO Code	Target ISO Code	Target ISO Code
-	2 x Life	3 x Life	4 x Life	5 x Life
28/26/23	25/22/19	22/20/17	20/18/15	19/17/14
27/25/22	23/21/18	21/19/16	19/17/14	18/16/13
26/24/21	22/20/17	20/18/15	19/17/14	17/15/12
25/23/20	21/19/16	19/17/14	17/15/12	16/14/11
25/22/19	20/18/15	18/16/13	16/14/11	15/13/10
23/21/18	19/17/14	17/15/12	15/13/10	14/12/9
22/20/17	18/16/13	16/14/11	15/13/10	13/11/8
21/19/16	17/15/12	15/13/10	13/11/8	-
20/18/15	16/14/11	14/12/9	-	-
19/17/14	15/13/10	13/11/8	-	-
18/16/13	14/12/9	-	-	-
17/15/12	13/11/8	-	-	-
16/14/11	13/11/8	-	-	-
15/13/10	13/11/8	-	-	-
14/12/9	13/11/9	-	-	-

Cleaner Fluid Longer Component & Fluid Life More Uptime






Precision Filtration Products | Pennsburg, PA
 215-679-6645 | 215-679-6648
 sales@pfpusa.com | www.pfpusa.com

