



# SFC Spin-On Filter Cart

Flow rate available in 1 GPM, 5 GPM, 11 GPM, & 22 GPM

Our **SFC Spin-On Filter Cart** is ideal for hydraulic fluids (ISO VG22 ~ ISOVG68). Our **SFC Filter Cart** is designed for filtering new fluids during transfer and replenishment, flushing fluids already in service, removing particulate and water contamination, and conditioning bulk oil before use. The two stage filtration offers the advantage of removing both particulate and water contamination. We also offer a **particle counter** and **3-Stage By-Pass** option.

The **SFC Filter Cart** is constructed with a strong, lightweight aluminum cart with puncture-resistant tires. It is available with Beta 1000 rated Microglass and Water Absorbing filter elements. It also includes oil sampling ports on the inlet and outlet connections to provide **ISO 4406** code comparisons. This will allow you to meet your target **ISO cleanliness codes** and prolong the life of your equipment and fluids.

The **SFC Filter Cart** is available with a Mechanical Pump and Motor combination as a standard. A **Pneumatic Pump with Pulsation Dampener** is available as an option. Please contact your sales representative for additional information.



## Standard Features

- 1, 5, 11, and 22 GPM Flow Rates
- 110 Volt/60 Hz/1Ph Electrical Service
- Internal Pressure Relief on Pump @ 100 PSI
- 25 PSID True Differential Gauge
- (2) Oil Sampling Ports
- Lightweight Aluminum Frame
- Aluminum Drip Pan
- Stainless Steel Tubing with JIC Fittings
- Stainless Steel Wand Storage
- No-Flat Pneumatic Wheels

\*Additional options are available upon request. All carts can be completely customized to your specific application. We have the ability to add on-line particle counters, VFD controls, by-pass valves, etc.

## Advantages

- BETA 1000 Rated Filter Elements per ISO 16889 Standards
- Water Removal Filter Elements
- Oil Sampling Ports
- True Differential Indicators
- 25 PSID By-Pass
- ISO Viscosity Range of ISO VG22 to ISO VG68

## Fluid Compatibility

Petroleum and mineral based fluids (standard). For Polyester, phosphate ester, and other specific synthetics, use Viton Seal Option or contact factory.

## Options



Online Particle Counter



Spin-On Strainer



Variable Frequency Drive



Reservoir Tank



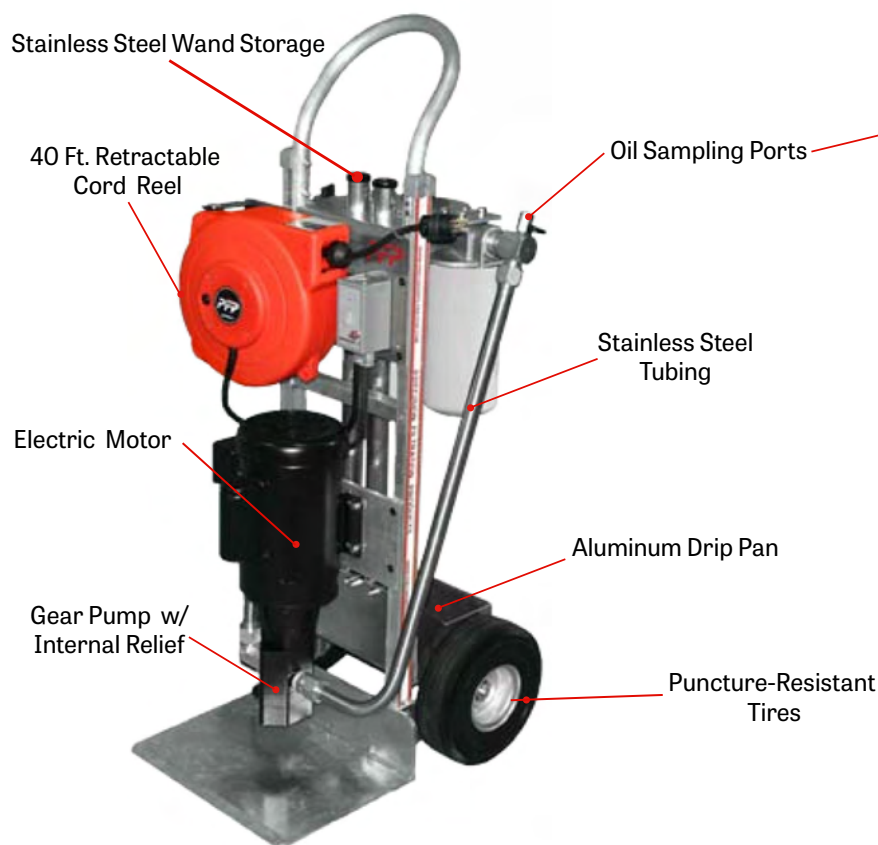
Precision Filtration Products | Pennsburg, PA  
215-679-6645 | 215-679-6648  
sales@pfpusa.com | www.pfpusa.com



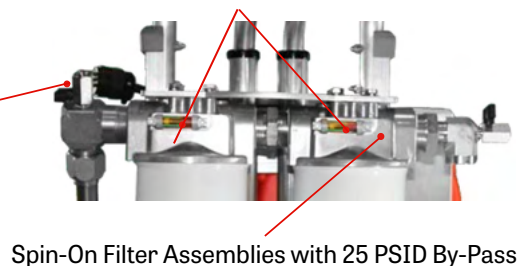


# SFC Spin-On Filter Cart

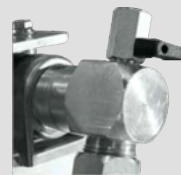
Flow rate available in 1 GPM, 5 GPM, 11 GPM, & 22 GPM



True Differential Pressure Indicators



Sample Ports Puncture Resistant Tires



Hour Meter



Differential Indicator



## Operating Temperature

Nitrile (Buna) -40°F to 150°F (-40°C to 66°C)  
Fluorocarbon (Viton)\* -15°F to 200°F (-26°C to 93°C)

\*High temperature / phosphate ester design

## Recommended Viscosity Range

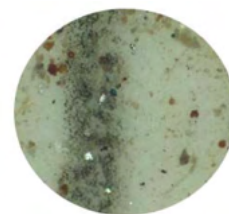
5 GPM\*: 28 SSU ~ 2000 SSU, 6 cSt ~ 400 cSt  
11 GPM\*: 28 SSU ~ 1000 SSU, 6 cSt ~ 200 cSt  
22 GPM\*: 28 SSU ~ 1000 SSU, 6 cSt ~ 200 cSt

\*At maximum viscosity clean element pressure drop with 3µm media code < 12 psid/0.85 bar. Please check maximum viscosity of oil in coldest condition. For high viscosity oils, consider our LCFC series filter cart.

## Filtering New Oil - Particulate & Water

New oil is typically not clean oil, and might not be suitable for use in hydraulic and lube systems. During the production and transportation process new oil collects high levels of solid contaminant and water. A common ISO code for new oil is 24/22/19. New oil is one of the worst sources of particulate contaminant system ingress. The SFC will effectively remove free water while capturing particulate with high efficiency. Free and dissolved water in hydraulic and lube systems leads to accelerated abrasive wear, corrosion of metal surfaces, increased electrical conductivity, viscosity variance, loss of lubricity, fluid additive breakdown, bearing fatigue, and more. The SFC series filter cart includes a wide range of element combination options to tackle any challenge.

New Oil



## Flushing & Conditioning - Existing Systems

The SFC is also effective for condition fluids that are already in service. Equipping hose ends and reservoirs with quick disconnect fittings allows you to use the SFC as a portable side loop system that can service several machines.



Precision Filtration Products | Pennsburg, PA  
215-679-6645 | 215-679-6648  
sales@pfpusa.com | www.pfpusa.com





# SFC Spin-On Filter Cart

Flow rate available in 1 GPM, 5 GPM, 11 GPM, & 22 GPM

## Improving ISO Codes

Laboratory and field tests prove time and time again that our filters consistently deliver lower ISO fluid cleanliness codes. Improving fluid cleanliness means reduced downtime, longer fluid life, and more reliable equipment.

## Develop a Fluid Cleanliness Target

PFP will help you develop a plan to achieve/maintain target fluid cleanliness. Arm yourself with the support, training, tools, and practices to operate more efficiently, maximize uptime, and save money.

## New Oil is Typically Dirty Oil

New oil can be one of the worst sources of particulate and water contamination.

24/22/19 is a common ISO code for new oil which is not suitable for hydraulic or lubrication systems. A good target for new oil cleanliness is 16/14/11.

## Hydraulic Component

Current ISO Code	Target ISO Code	Target ISO Code	Target ISO Code	Target ISO Code
-	2 x Life	3 x Life	4 x Life	5 x Life
28/26/23	25/23/21	25/22/19	23/21/18	22/20/17
27/25/22	25/23/19	23/21/18	22/20/17	21/19/16
26/24/21	23/21/18	22/20/17	21/19/16	21/19/15
25/23/20	22/20/17	21/19/16	20/18/15	19/17/14
25/22/19	21/19/16	20/18/15	19/17/14	18/16/13
23/21/18	20/18/15	19/17/14	18/16/13	17/15/12
22/20/17	19/17/14	18/16/13	17/15/12	16/14/11
21/19/16	18/16/13	17/15/12	16/14/11	15/13/10
20/18/15	17/15/12	16/14/11	15/13/10	14/12/9
19/17/14	16/14/11	15/13/10	14/12/9	14/12/8
18/16/13	15/13/10	14/12/9	13/11/8	-
17/15/12	14/12/9	13/11/8	-	-
16/14/11	13/11/8	-	-	-
15/13/10	13/11/8	-	-	-
14/12/9	13/11/9	-	-	-

## Roller Contact Bearing

Current ISO Code	Target ISO Code	Target ISO Code	Target ISO Code	Target ISO Code
-	2 x Life	3 x Life	4 x Life	5 x Life
28/26/23	25/22/19	22/20/17	20/18/15	19/17/14
27/25/22	23/21/18	21/19/16	19/17/14	18/16/13
26/24/21	22/20/17	20/18/15	19/17/14	17/15/12
25/23/20	21/19/16	19/17/14	17/15/12	16/14/11
25/22/19	20/18/15	18/16/13	16/14/11	15/13/10
23/21/18	19/17/14	17/15/12	15/13/10	14/12/9
22/20/17	18/16/13	16/14/11	15/13/10	13/11/8
21/19/16	17/15/12	15/13/10	13/11/8	-
20/18/15	16/14/11	14/12/9	-	-
19/17/14	15/13/10	13/11/8	-	-
18/16/13	14/12/9	-	-	-
17/15/12	13/11/8	-	-	-
16/14/11	13/11/8	-	-	-
15/13/10	13/11/8	-	-	-
14/12/9	13/11/9	-	-	-

Cleaner Fluid      Longer Component & Fluid Life      More Uptime



Visit us at  
[www.PFPUSA.com](http://www.PFPUSA.com)

☎ 215-679-6645

✉ [sales@pfpusa.com](mailto:sales@pfpusa.com)



Precision Filtration Products | Pennsburg, PA  
215-679-6645 | 215-679-6648  
[sales@pfpusa.com](mailto:sales@pfpusa.com) | [www.pfpusa.com](http://www.pfpusa.com)

